

# MONGOOSE®

2007

**MUST  
HAVE**

bikes to drool over



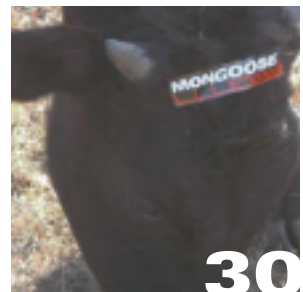
**RIDER  
INTERVIEW**

**SABROSA**

one more reason to commute

# CONTENTS

contributors	4
to the sport	
black diamond	7
triple, double	
eric carter	8
check out what he's up to lately and his signature bikes	
all mountain	10
teocali, canaan	
canaan team	13
check it out	
dirt jump	14
ritual, thunderball, fireball	
recreational mountain bikes	16
otero, amasa, tyax	
entry level mountain	20
zero g, rockadile	
product guys	21
dress codes, oh bother	
pavement	24
sabrosa, crossway, switchback sx	
team bmx	31
legion, fraction, shield	
trail bmx	32
expert, brawler, menace	
freestyle	34
villain, mischief, subject, pitcrew	
juvenile	36
motivator, motivator mini	
full spec grids	37



Welcome to the 2007 Mongoose® magalog. Yes, we have come out with a magalog to help introduce so much of the unique, crazy and cool things that Mongoose® continues to do to this day. It seems that throughout the history of Mongoose®, all 30 plus years, people have been telling us what we can't do. And every year we take those comments and turn them on their ear. Two years ago we introduced an all-mountain full suspension platform in the Black Diamonds that felt and rode just as good up the hill as down. We took a 26" mountain bike, blended it with a BMX bike, and designed the most original and utilitarian park bike ever in the Ritual. And now we have introduced a coffee commuter bike, the Sabrosa, that would be just as happy at a mountain bike race as it would be on the bike path to work in the morning.

But you can learn more about the Sabrosa, Eric Carter and more in this magalog. Like any magazine that responds to its readers, we have worked to answer the desires of our Mongoose® riders with a women's specific Teocali frame or integrating our FreeDrive suspension into a 24 hour race-ready cross country rig, called the Canaan. Sit down, enjoy yourself, and find out more about Mongoose® by turning the page. We have 30 years of history to back us up - but we aren't afraid to take on our critics to keep pushing the bar forward in the future.



P: COREY RADLUND



**E. CARTER**

MTB DH/4X  
 Age: 35  
 Current Residence: Temecula, CA  
 What do you do in your spare time?  
 Play with my son, Ethan and build trails.



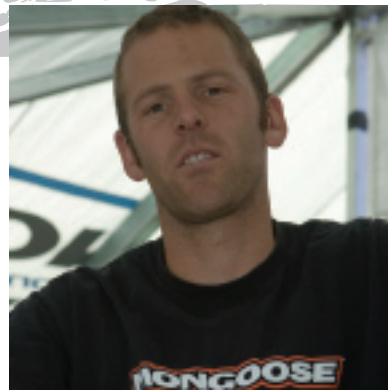
**A. NEETHLING**

MTB DH/4X/Freeride  
 Age: 21  
 Current Residence: Somerset West, South Africa  
 What do you do in your spare time?  
 I like Motocross, socializing with friends and try to catch up on the normal things in life I sometimes miss while riding.



**J. DECHAMP**

MTB 4X/Freeride  
 Age: 25  
 Current Residence: Haywood, MD  
 What do you do in your spare time?  
 I'm interested in motorcycles, paintball, RC cars, shooting videos and snowboarding.



**A. PETERS**

MTB DH/4X/Freeride  
 Age: 26  
 Current Residence: Santa Cruz, CA  
 What do you do in your spare time?  
 I like to dig, surf, play Disc Golf and ride Motocross.



**S. MCCANN**

BMX DIRT/STREET  
 Age: 23  
 Current Residence: Woodward, PA  
 What do you do in your spare time?  
 The beach is always a must my spare time, so I surf when I can.



**E. RUPE**

"BIG DADDY"  
 BMX RACE  
 Age: 42  
 Current Residence: Chatsworth, CA  
 What do you do in your spare time?  
 I like to golf, ride Motocross, watch TV and go to the gym.



**C. WHITE**

BMX DIRT/STREET  
 Age: 21  
 Current Residence: Canberra, Australia  
 What do you do in your spare time?  
 I like going to the beach, playing with my dogs and girls.



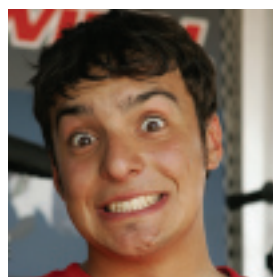
**S. TABRON**

BMX VERT  
 Age: 32  
 Current Residence: Newquay, England  
 What do you do in your spare time?  
 Aside from spending time with my wife and my pets (I have three cats and two Siberian Husky dogs), I play guitar and write music.



**T. HALL**

"FUZZY"  
 BMX DIRT  
 Year Turned Pro: 1989  
 Current Residence: Kaysville, UT  
 What do you do in your spare time?  
 I am a father, run two bike shops, build the courses that we compete on and run the bike side of things at Ogio Bags in Salt Lake City.



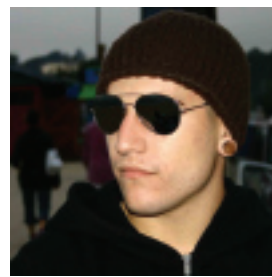
**"THE BULL"**  
 CESAR FLORES  
 BMX DIRT  
 Turned Pro in 2005  
 Very Proud Member of the Mongoose Stunt Team



**OMMAR**  
 OMMAR ESTRADA  
 BMX STREET/VERT  
 Turned Pro in 2000  
 Proud Member of the Mongoose Stunt Team



**BO**  
 BO WADE  
 BMX FLATLAND  
 Turned Pro in 2000  
 Proud Member of the Mongoose Stunt Team



**"COCO"**  
 FRANCISCO ZURITA  
 BMX STREET/VERT  
 Turned Pro in 2005  
 Proud Member of the Mongoose Stunt Team

**ERIC CARTER**  
 MONGOOSE PRO, '05 & '06 NATIONAL CHAMP  
 ERIC CARTER BOUNCED BACK BIG FROM INJURIES THIS YEAR TO TAKE THE '06 NORBA MOUNTAIN CROSS TITLE. THANKS FOR KICKING ASS, EC.

**MONGOOSE**

KENDA SRAM PEARLIZIMI SUNINGLE FLY EASTON OGIO C.S.P. ULTRA bicycle care

MONGOOSE.COM



P. COREY RADLUND



**Triple**

**FRAME:** New MONGOOSE Freedrive Extreme 6061 Aluminum w/ Patented Floating BB, 1.5" Headtube, Replaceable 150x12mm Maxle Dropouts & Disc Mount, Adjustable 6.5/7.5" Travel  
**FORK/SHOCK:** Marzocchi 66SL 1 ATA w/ Dual Air Spring, 140-180mm Adjustable Travel, RC2 Rebound & Compression Adjust, 20mm Thru Axle; Fox DHX Air-4.0 Air Spring w/ Piggyback Reservoir, Boost Valve, Adjustable ProPedal Damping, Adjustable Tuning Range, Preload & Rebound Adjust  
**DRIVETRAIN:** SRAM X-9 9-Speed Derailleur, SRAM X-9 Trigger Shifter w/ Matchmount; FSA Gravity 36t Crankset w/ Bashguard & External Bearings  
**BRAKES:** Avid Juicy 7 Hydraulic Disc w/ 203mm Rotors  
**WHEELS:** WTB Laser Disc FR Rims w/ WTB Laser Disc Super Duty 32h Thru Axle Disc Hubs, Kenda Nevegal FR 2.5" Tires w/ Stick-E Rubber & Pinch Flat Protection  
**COCKPIT:** Easton EA70 31.8mm Bar & Havoc Stem, Titec Knockscoper 1-Beam Telescoping Post & SDG Bel Air ST Saddle



**Double**

**FRAME:** New MONGOOSE Freedrive Extreme 6061 Aluminum w/ Patented Floating BB, 1.5" Headtube, Replaceable 150x12mm Maxle Dropouts & Disc Mount, Adjustable 6.5/7.5" Travel  
**FORK/SHOCK:** RockShox Domain 318 w/ Speed Stack Motion Control & Rebound Adjust, 180mm Travel, 20mm Thru-Axle; Fox DHX Air-3.0 Air Spring w/ Piggyback Reservoir, ProPedal Damping & Boost Valve, Adjustable Tuning Range, Rebound Adjust  
**DRIVETRAIN:** SRAM X-7 9-Speed Derailleur, SRAM X-7 Trigger Shifter; FSA Gap 36t Crankset w/ Bashguard & External Bearings  
**BRAKES:** Hayes HFX-9 Hydraulic Disc w/ V-8 Rotors & BFL Levers  
**WHEELS:** WTB Speed Disc XL Rims w/ 32h Thru-Axle Disc Hubs, Kenda Nevegal FR 2.5" Tires w/ Stick-E Rubber & Pinch Flat Protection  
**COCKPIT:** Easton EA50 31.8mm Bar & Vice Stem, Titec Knockscoper 1-Beam Telescoping Post & SDG Bel Air ST Saddle

# INTERVIEW WITH ERIC CARTER



Interview by Stephen Balsley



Eric Carter called up a shop in the summer of 2006 and asked if he could come out and ride with them the following Monday. The shop owner, not believing that it was really Eric Carter, argued with him, asking who it really was. It seems the owner thought one of his friends was prank calling the store. As Eric said, "He was like 'Who is this really?' And I had to convince him by saying 'This really is Eric Carter'." It's those kinds of stories that demonstrate why Eric's one of the most beloved, popular and celebrated mountain bikers ever. We sat down to ask him a couple of questions before a hot summer ride to see what makes him tick.

A world champion 4X racer and the 2006 U.S. National Mountain Cross Champion, Eric Carter has been dominating the downhill slopes of major UCI events for years. Racing on his Mongoose® signature bikes, the Eric Carter Downhill (the EC-D) and the Eric Carter Mountain Cross bike (the EC-X), Eric worked his way back from an early-season

injury in 2006 to once again hit several podiums since, including the US National Championships. EC worked very closely with Mongoose® to develop his frames to meet his demand. Something that we know every rider will respect.

**SB:** What was the first race you ever won?  
**EC:** The first race I ever entered. Seriously. I was 8 years old and I entered a local race in the Regional SoCal Cycling League on a borrowed bike. I was so intimidated by the starting gate and the entrance – that I braked all the way to the bottom of the hill. But then I passed everyone. I guess that is kind of like my style now. I might not be the first one out of the gate, but I ride hard and pick good lines to make sure I can pass guys. I was a wound up and determined little 8 year-old who really didn't want to lose.

**SB:** What three people would you most like to go on a ride with?  
**EC:** Man, that's a tough question. I would definitely have to pick my grandfather because he passed when I was 10 years old and I never really got to have a grown



**EC-D™**  
**FRAME:** MONGOOSE Freedrive Downhill 6061 Aluminum w/ Patented Floating BB, Replaceable 150 x 12mm Thru-Axle Dropouts & Disc Mount, 7.3-8.4" Travel  
**FORK/SHOCK:** RockShox Boxxer Team w/ Motion Control Damping w/ High & Low Speed Compression Damping & Rebound Adjust, 203mm Travel; Fox DHX-5.0 Coilover w/ Piggyback Reservoir, Boost Valve, Adjustable ProPedal Damping, Adjustable Tuning Range, Preload & Rebound Adjust  
**DRIVETRAIN:** 9-Speed w/ SRAM X-9 Derailleur & Trigger Shifter; Truvativ Holzfeller 38t Crankset w/ External Bearings  
**BRAKES:** Avid Juicy 7 Hydraulic Disc w/ Speed Dial Adjust & 8" Rotors  
**WHEELS:** Sun MTX Team Rims w/ Ringle Abbah SOS 32h Thru Axle Disc Hubs, Kenda Nevegal DH 2.5" Tires w/ Stick-E Rubber  
**COCKPIT:** Easton EA70 31.8mm Bar & Havoc Stem; SDG I-Beam 2014 Alloy Post & Bel Air ST Saddle

up conversation with him. He was a smart guy who worked in the Pentagon and for the military for years, and I don't know if he ever really got the chance to ride. I guess I would have to pick my dad for the same reason. He never really got to ride either, and I know that's something I look forward to most in the world is heading out to ride with my son in a couple of years. The third guy would have to be Doug Jicha. I use to race BMX with him in the day, but he passed away from Hodgskin's Disease about 10 years ago. And I just miss the guy. If I had a chance to ride with him one more time, that would be cool.

**SB:** This past year, you started the MONGOOSE Tribe of riders. What's it all about?  
**EC:** The Tribe was an idea that was kind of created out of a desire to have a gathering of like minded, fun, riders. To take a group of people with common interests and really get them out their together and ride. I mean, the guys in the Tribe aren't all pro riders, they are more the salt of the sport kind of Sport and Expert class riders that really live this lifestyle. I believe so much in my



**EC-D™ frameset**  
**FRAME:** MONGOOSE Freedrive Downhill 6061 Aluminum w/ Patented Floating BB, Replaceable 150 x 12mm Thru-Axle Dropouts & Disc Mount, 7.3-8.4" Travel  
**SHOCK:** Fox DHX-5.0 Coilover w/ Piggyback Reservoir, Boost Valve, Adjustable ProPedal Damping, Adjustable Tuning Range, Preload & Rebound Adjust



**EC-X™ frameset**  
**FRAME:** MONGOOSE Freedrive Fourcross 6061 Aluminum w/ Patented Floating BB, Replaceable 135mm Q/R Dropouts & Disc Mount, Adjustable 2.8/3.0" Travel  
**SHOCK:** RockShox BlackBox Technology MC3.1 Air Shock w/ Motion Control Damper, Externally Adjustable Floodgate Setting & Rebound

signature bike and I really wanted to help get more guys out there riding. I was having so much fun at the party, that I wanted to bring some other guys along. It really is a great experience.

**M:** Tell us about your best day on a bike that was not a race.  
**EC:** I can't narrow it down beyond two rides. Sorry. But these were both pretty epic. One of them has to be the 2000 RockShox Fork Demo when a group of local riders in Moab took me out into the desert and showed me a really cool dinosaur fossil. It wasn't just a couple of bones, this was like the whole spine just hanging out there. That was pretty amazing. And the other one has to be my first Kernville Fat Tire Festival. Another ride that was really epic trails, but it was my first time really getting into mountain biking. It really showed me the lifestyle with guys out camping next to the river and drinking some beer with friends. That really got me into the whole lifestyle.

**SB:** What is the best advice you could give to someone just starting out in 4 cross or downhill?  
**EC:** Two things. Have fun. Don't take it so seriously that you forget why you are out there. I see too many guys with really cool bikes and expensive kits who are out there to win, and they forget to have fun. It's not only about winning, it's about riding. And the other thing to do just that, have a good time on your bike. You can make tons of lifelong friends riding bikes. I don't think there is anything cooler than that.

We couldn't agree with you more, Eric.



FRAME SET SPECIFICATIONS		
	MOUNTAIN DUAL SUSPENSION	
CATEGORY	EC-D	EC-X
MODEL	EC-D	EC-X
COLORS	TEAM ORANGE & PEARL WHITE	TEAM ORANGE & PEARL WHITE
SIZES	S/M, M/L	S/M, M/L
FRAME	FREEDRIVE DOWNHILL 7.3-8.4" (189-214 MM) TRAVEL 150X12 MM ROCK SHOX MAXLE REPLACEABLE DROPOUT	FREEDRIVE FOUR CROSS 2.8-3.0" (73-83 MM) TRAVEL 135 MM QR REPLACEABLE DROPOUTS
REAR SHOCK	FOX DHX-5.0 COIL OVER W/PIGGY BACK, WITH ADJUSTABLE PROPEL DAMPING, BOOST VALVE, TUNING RANGE, REBOUND AND PRE-LOAD. (9.5X3.0")	ROCK SHOX MC3.1, AIR SHOCK WITH MOTION CONTROL DAMPER, EXTERNALLY ADJUSTABLE FLOODGATE SETTING AND REBOUND (6.0X1.0")
SEAT CLAMP	ALLOY Q/R	ALLOY Q/R

## Teocali™ Super

**FRAME:** MONGOOSE Freedrive All Mountain 6061 Aluminum w/ Zero Stack Headset, Forged Dropouts & Disc Mount, Replaceable Derailleur Hanger, Adjustable 4.75/5.75" Travel  
**FORK/SHOCK:** RockShox Pike 454 Dual Air w/ External Motion Control, Poploc Remote, Maxle 20mm QR, 140mm Travel; RockShox Motion Control 3.3 Air Shock w/ Adjustable Motion Control, 3-Position Platform & Rebound Damping  
**DRIVETRAIN:** 27-Speed w/ SRAM X-9 Rear & Shimano XT Front Derailleurs, SRAM X-9 Trigger Shifters w/ Matchmaker Mount; FSA Afterburner 2-Pc Crankset w/ External Bearings  
**BRAKES:** Avid Juicy 7 Hydraulic Disc w/ Speed Dial Adjust, 180/160mm Rotors  
**WHEELS:** WTB Laser Disc Trail Rims w/ WTB Laser Disc 20mm Thru Axle F & QR R Disc Hubs, Kenda Nevegal DTC 2.35" F & 2.1" R Kevlar Bead Tires  
**COCKPIT:** Easton EA70 31.8mm Bar & Vice Stem, Kore I-Beam Race I-Beam Post & Enduro I-Beam Saddle



## Teocali™ Elite Women's

**FRAME:** MONGOOSE Freedrive All Mountain 6061 Aluminum w/ Zero Stack Headset, Forged Dropouts & Disc Mount, Replaceable Derailleur Hanger, Adjustable 4.75/5.75" Travel, Shorter Top Tube Length  
**FORK/SHOCK:** RockShox Pike 409 w/ Motion Control, Low Speed Compression to Lock, 20mm Maxle Thru-Axle Dropouts, 95-140mm U-Turn Adjustable Travel; RockShox MC 3.1 Air Shock w/ Adjustable Motino Control & Rebound  
**DRIVETRAIN:** 27-Speed w/ Shimano XT Rear & LX Front Derailleurs, LX RapidFire Shifters; Truvativ Firex 2-Pc Crankset w/ External Bearings  
**BRAKES:** Hayes HFX9 Hydraulic Disc, 180/160mm Rotors, Short Reach Levers  
**WHEELS:** WTB Speed Disc All Mountain Rims w/ WTB Disc Hubs, Kenda Nevegal DTC 2.35" F & 2.1" R Kevlar Bead Tires  
**COCKPIT:** Easton EA30 31.8mm Bar & Vice Stem, MONGOOSE Double Bolt Post & WTB Deva Comp Women's-Specific Saddle



**100% Chick:** After the stellar reaction of everyone to our special make up Pink Diamond freeride bike last year, we decided to re-spec a Teocali for all of the women that demand a fast all-mountain full suspension bike. The 100% Chick decal calls out a bike that features components and geometry designed for those women who want to rip. Nothing wrong with riding like a girl. Especially when this bike helps you pass the boys.

## Teocali™ Elite

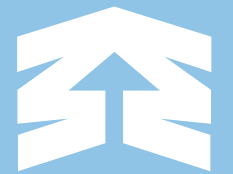
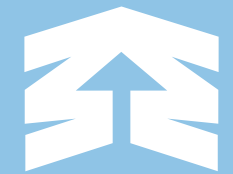
**FRAME:** MONGOOSE Freedrive All Mountain 6061 Aluminum w/ Zero Stack Headset, Forged Dropouts & Disc Mount, Replaceable Derailleur Hanger, Adjustable 4.75/5.75" Travel  
**FORK/SHOCK:** RockShox Pike 409 w/ Motion Control, Low Speed Compression to Lock, 20mm Maxle Thru-Axle Dropouts, 95-140mm U-Turn Adjustable Travel; RockShox MC 3.1 Air Shock w/ Adjustable Motino Control & Rebound  
**DRIVETRAIN:** 27-Speed w/ Shimano XT Rear & LX Front Derailleurs, LX RapidFire Shifters; Truvativ Firex 2-Pc Crankset w/ External Bearings  
**BRAKES:** Hayes HFX9 Hydraulic Disc, 180/160mm Rotors & BFL Levers  
**WHEELS:** WTB Speed Disc All Mountain Rims w/ WTB Disc Hubs, Kenda Nevegal DTC 2.35" F & 2.1" R Kevlar Bead Tires  
**COCKPIT:** Easton EA30 31.8mm Bar & Vice Stem, Kore I-Beam Race I-Beam Post & Enduro I-Beam Saddle



## Teocali™ Comp

**FRAME:** MONGOOSE Freedrive All Mountain 6061 Aluminum w/ Zero Stack Headset, Forged Dropouts & Disc Mount, Replaceable Derailleur Hanger, Adjustable 4.75/5.75" Travel  
**FORK/SHOCK:** SR/Suntour Epicon w/ Air Spring, Rebound Adjust & 32mm Stanchions, 140mm Travel; SR/Suntour Epicon Air Shock w/ Rebound Adjust  
**DRIVETRAIN:** 27-Speed w/ SRAM SX-5 Rear & Shimano Deore Front Derailleurs, SRAM X-7 Trigger Shifters; FSA Alpha Drive Crankset w/ PowerDrive Splined Bottom Bracket  
**BRAKES:** Tektro Auriga Comp Hydraulic Disc, 180/160mm Rotors  
**WHEELS:** WTB Speed Disc All Mountain Rims w/ Alloy Disc XC Rims w/ Alloy Disc Hubs, Kenda Nevegal 2.35" F & 2.1" R Tires  
**COCKPIT:** MONGOOSE Oversize 31.8mm Bar/Stem, MONGOOSE Double Bolt Post & WTB Pure V Sport Saddle





P. COREY RADLUND

**Canaan™ Team**

**FRAME:** All New MONGOOSE Butted Aluminum Freedrive XC Enduro w/ 3.9" (100mm) Travel  
**FORK/SHOCK:** Fox F100X Air, Air Spring, Rebound Adjust & Inertia Valve Platform, 100mm Travel; Fox RP23 Air Shock w/ Adjustable Rebound & 3-Setting ProPedal  
**DRIVETRAIN:** 27-Speed w/ SRAM X-0 Rear & Shimano XT Front Derailleurs, SRAM X-0 Trigger Shifters w/ Matchmaker Mount; FSA Carbon Pro Team Issue Cranks w/ External Bearings  
**BRAKES:** Avid Juicy Ultimate Hydraulic Disc, 160mm Rotors  
**WHEELS:** No Tubes ZTR Olympic Disc Tubeless Rims w/ Ringle Dirt Flea Disc Hubs, Kenda Karma 2.0" DTC Kevlar-Bead Tires  
**COCKPIT:** Easton Monkey Lite SL Lo Rise Handlebar & EA70 Stem, Kore I-Beam Elite Carbon Post & I-Beam Saddle



The story... CANAAN is the location of the world's first 24-hour mountain bike team relay race. This wicked course consisted of wet root and mud covered rock descents where riders were heard to pray for the fire-road climbs so they could recover. The event could be summed up as an outlet for hardcore mountain bike enthusiasts to test themselves (and their equipment) and spawned a generation of riders always searching for how far they could go. The 24 Hours of CANAAN capped out at 500 teams of which typically only a few were pro level. In honor of this place that started the ultra distance love affair with dirt, Mongoose® has set out to design the ride that can suit the pro but is also keeping the everyday rider in mind.....

for rock solid handling at high speed and steep descents. This handling also makes the bike more stable at the end of an endurance fest when your senses are getting hazy.

Shooting for that harmony between hardcore frame strength yet light-weight construction, the CANAAN resounds with both the weight geek and the back country freak. All pivot locations use a common 5 mm allen wrench and easily sourced bearings from any local bike store. Dual disc specific design...all conditions reliable braking that goes the distance.



P. COREY RADLUND

Custom-tuned FreeDrive design with emphasis on good pedaling yet compliant traction. 100mm of travel front and rear (not too much, not too little) keying in on efficiency and control. The engineers at Mongoose can massage the FreeDrive system to suit any conditions, and in the case of the CANAAN, they've maximized traction for climbs and enhanced control for flats and downhills.

The geometry of the CANAAN is suited for everyday trail riding as well as race day. 69.5 degree head angle and a low slung center of gravity make

**Canaan™ Elite**

**FRAME:** All New MONGOOSE Butted Aluminum Freedrive XC Enduro w/ 3.9" (100mm) Travel  
**FORK/SHOCK:** Fox F100RL, Air Spring, Adjustable Rebound & Lockout, 100mm Travel; Fox RP3 Air Shock w/ Adjustable Rebound & ProPedal  
**DRIVETRAIN:** Shimano XT 27-Speed w/ New XT Derailleurs & Trigger Shifters; FSA Afterburner Hollow Forged Crankset w/ External Bearings  
**BRAKES:** Avid Juicy 5 Hydraulic Disc, 160mm Rotors  
**WHEELS:** WTB LaserDisc Lite Wheelset; Kenda Karma 2.0" DTC Kevlar-Bead Tires  
**COCKPIT:** Easton EA50 Bar & Stem, Kore I-Beam Post & I-Beam Race Saddle





# ritual

## Ritual™

**FRAME:** Updated MONGOOSE 4130 CroMoly 24/26" Convertible Jumping w/ Dual Rim Brake Mounts, Disc Brake Mounts, 135mm Hub Spacing, New Smaller Dropouts, Bolt-On Derailleur Hanger & Down Tube Shifter Mount, Dual Cable Routing & Weld-On ORYG Tabs  
**FORK:** Marzocchi Dirt Jumper 3, Air Assist, External Rebound Adjust, 100mm Travel  
**DRIVETRAIN:** 33t Chaining / 16t Cog, 3-Pc Heat Treated Tubular CrMo Crankset w/ 8 Spline CrMo Spindle  
**BRAKES:** Hayes MX4 Mechanical Disc w/ Forged Levers  
**WHEELS:** Sun Ditch Witch Rims, Formula Alloy Disc F & Cassette R Hubs, Kenda K-Rad 26"x 2.3" F & Kniption 26"x2.3" R. Tires  
**COCKPIT:** MONGOOSE Pry Bar CrMo 50mm Rise Bar & Alloy BMX Stem, MONGOOSE Alloy 31.6mm Post & MONGOOSE M-Logo Knee-Grabber Jumping Saddle

P. COREY RADLUND



## Thunderball™

**FRAME:** MONGOOSE Flat Top Tube Technology (F3T) MONGOOSE 6061 Aluminum Jumping w/ Shaped Toptube & Downtube, Rectangular Seatstays & Chainstays, Disc Mount w/ Cable/Hose Guides, Rear Facing Dropouts w/ Integrated Chain Tensioners  
**FORK:** Marzocchi Stance Static, Air Assist, Hydraulic Damping, 100mm Travel  
**DRIVETRAIN:** 16-Speed w/ SR Suntour DuroLux GTB Short Cage Rear & Shimano Alivio Front Derailleur, SRAM SX-7 Trigger Shifters; Truvativ Hussefelt Crankset w/ External Bearings  
**BRAKES:** Hayes MX-2 Mechanical Disc, Hayes HML Levers  
**WHEELS:** Sun Single Track Rims, Alloy Disc Hubs, Kenda Blue Groove 2.35" F & Nevegal 2.35" R Tires  
**COCKPIT:** Atom Lab General Issue Race CrMo Bar w/ 2" Rise/Atom Lab General Issue 50mm Stem, MONGOOSE M-Logo BMX-Style Jumping Saddle

## Fireball™

**FRAME:** MONGOOSE Flat Top Tube Technology (F3T) MONGOOSE 6061 Aluminum Jumping w/ Shaped Toptube & Downtube, Rectangular Seatstays & Chainstays, Disc Mount w/ Cable/Hose Guides, Rear Facing Dropouts w/ Integrated Chain Tensioners  
**FORK:** SR Suntour Duro D w/ Hydraulic Damping, 100mm Travel  
**DRIVETRAIN:** 8-Speed w/ SR Suntour XCM660-GTB Short Cage Rear Derailleur, SRAM SX-5 Trigger Shifter; FSA Alpha Drive Bash Crankset w/ Bashguard, 36t Chaining  
**BRAKES:** Radius Mech 7.0 Mechanical Disc w/ Tektro Forged Levers  
**WHEELS:** Jalco DDZ Rims w/ Alloy Disc Hubs, Kenda Small Block Eight 2.35" F /2.1" R Tires  
**COCKPIT:** MONGOOSE Pry Bar CrMo 50mm Rise Bar & Alloy BMX Stem, MONGOOSE Alloy 31.6mm Post & MONGOOSE M-Logo Knee-Grabber Jumping Saddle



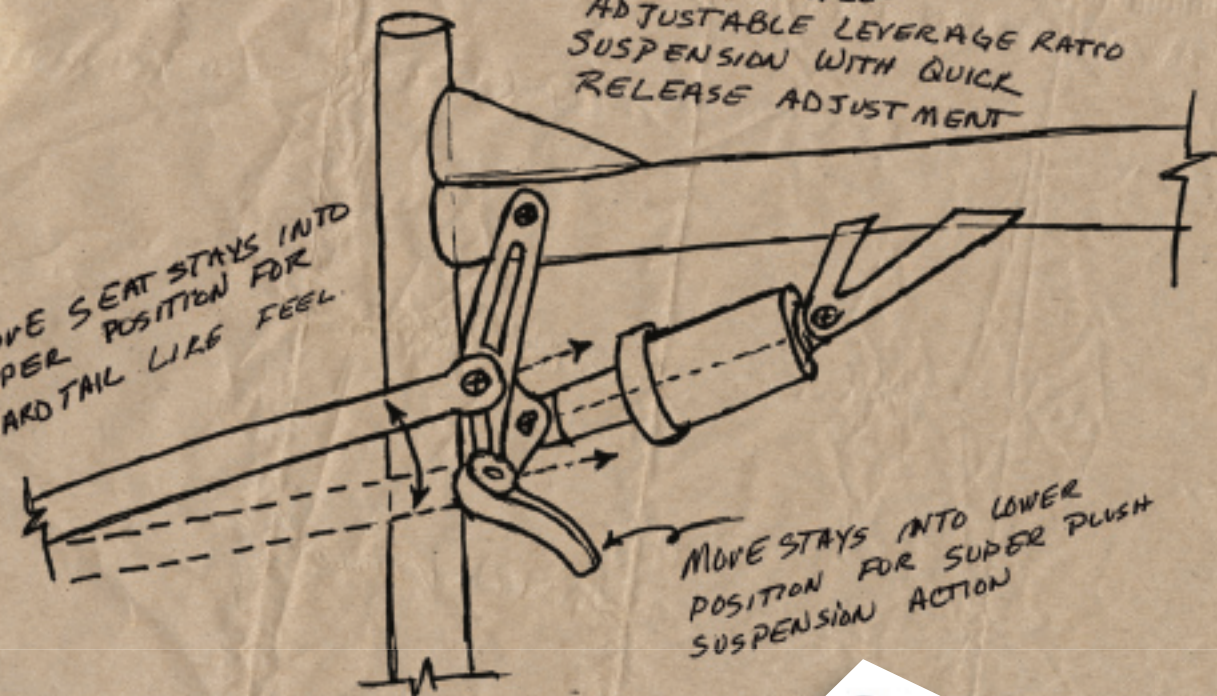
P. COREY RADLUND



## OTERO PROJECT

DESIGN PRINCIPLE-  
ADJUSTABLE LEVERAGE RATIO  
SUSPENSION WITH QUICK  
RELEASE ADJUSTMENT

MOVE SEAT STAYS INTO  
UPPER POSITION FOR  
HARD TAIL LIKE FEEL



MOVE STAYS INTO LOWER  
POSITION FOR SUPER PUSH  
SUSPENSION ACTION



### Otero™ Super

**FRAME:** New MONGOOSE Design Heat Treated Alloy Suspension, Zero Stack Headset, Disc Mounts & Replaceable Derailleur Hanger, 2.5" - 4.4" Travel  
**FORK/SOCK:** SR/Suntour X-1 w/ Magnesium Legs, Alloy Stanchions & Adjustable Rebound, 100mm Travel; SR/Suntour Air Shock w/ Adjustable Rebound  
**DRIVETRAIN:** 27-Speed w/ SRAM SX-5 Rear & Suntour Front Derailleurs, SRAM SX-5 Shifters, FSA Alpha Drive Alloy Crankset  
**BRAKES:** Tektro Auriga Comp Hydraulic Disc, 160mm Rotors  
**WHEELS:** WTB SX24 Disc Rims, Alloy Disc Hubs, Kenda Komodo Tires  
**COCKPIT:** MONGOOSE Oversize 31.8mm Rise Bar / MONGOOSE Alloy Stem, Alloy Post & WTB Speed V Sport Saddle

### Otero™ Elite

**FRAME:** New MONGOOSE Design Heat Treated Alloy Suspension, Zero Stack Headset, Disc Mounts & Replaceable Derailleur Hanger, 2.5" - 4.4" Travel  
**FORK/SOCK:** SR/Suntour XCM DA w/ Alloy Legs, 100mm Travel; Coilover Shock w/ Rebound Adjust  
**DRIVETRAIN:** 24-Speed w/ Shimano Alivio Rear & Suntour Front Derailleurs, Shimano Alivio Shifters, FSA Dyna-Alloy Crankset  
**BRAKES:** Tektro Auriga Comp Hydraulic Disc, 160mm Rotors  
**WHEELS:** Alex Double Wall Alloy Rims, Alloy QR Disc Hubs, Kenda Komodo Tires  
**COCKPIT:** MONGOOSE Oversize 31.8mm Rise Bar / MONGOOSE Alloy Stem, Alloy Post & WTB Speed V Sport Saddle



### Otero™ Comp

**FRAME:** New MONGOOSE Design Heat Treated Alloy Suspension, Zero Stack Headset, Disc Mounts & Replaceable Derailleur Hanger, 2.5" - 4.4" Travel  
**FORK/SOCK:** SR/Suntour XCM w/ Alloy Legs & Crown, 100mm Travel; Coilover Shock  
**DRIVETRAIN:** 24-Speed w/ Shimano Acera Rear & Suntour Front Derailleurs, Shimano EF-50 Shifters, SR/Suntour XCC150 Forged Alloy Crankset  
**BRAKES:** Radius Mechanical Disc, 160mm Rotors  
**WHEELS:** Alex Double Wall Alloy Rims, Alloy QR Disc Hubs, Kenda Komodo Tires  
**COCKPIT:** MONGOOSE Oversize 31.8mm Rise Bar / MONGOOSE Alloy Stem, Alloy Post & WTB Speed V Sport Saddle





### Amasa™ Comp

**FRAME:** MONGOOSE 6061 Aluminum Flat Top Tube Technology (F3T) w/ Shaped Toptube & Downtube, Zero Stack Headset, Disc Mount & Guides and Replaceable Derailleur Hanger

**FORK:** SR/Suntour X100 w/ 32mm Alloy Stanchions, Preload Adjust, Hydraulic Damping & Lockout, 120mm Travel

**DRIVETRAIN:** 27-Speed w/ SRAM SX-5 Rear & Suntour Duro-504 Front Derailleurs, SRAM SX-5 Trigger Shifters; FSA Alpha Drive Crankset w/ PowerDrive Bottom Bracket

**BRAKES:** Hayes MX-4 Mechanical Disc Brakes

**WHEELS:** WTB Speed Disc Rims w/ Alloy Disc Hubs, Kenda Nevegal 2.35" F & 2.1" R Tires

**COCKPIT:** MONGOOSE Oversize 31.8mm Bar/Stem, MONGOOSE Double Bolt Post & WTB Pure V Sport Saddle

COREY RADLUND

### Tyax™ Super

**FRAME:** MONGOOSE 6061 Aluminum w/ Trail Tested Geometry, Zero-Stack Headtube, M-Logo Gusset & Replaceable Derailleur Hanger

**FORK:** SR/Suntour XCR RL w/ Magnesium Legs, Adjustable Rebound & Remote Speed Lockout, 100mm Travel

**DRIVETRAIN:** 24-Speed w/ SRAM SX-5 Rear & Suntour Front Derailleurs, SRAM SX-5 Trigger Shifters, FSA Alpha Drive Crankset with PowerDrive Bottom Bracket

**BRAKES:** Tektro 10 Mechanical Disc

**WHEELS:** WTB SX24 Rims, Alloy Disc Hubs, Kenda Komodo Tires

**COCKPIT:** MONGOOSE Oversize 31.8mm Alloy Riser Bar & Stem, Alloy Post & WTB Speed V Sport Saddle



### Tyax™ Elite

**FRAME:** MONGOOSE 6061 Aluminum w/ Trail Tested Geometry, Zero-Stack Headtube, M-Logo Gusset & Replaceable Derailleur Hanger

**FORK:** SR/Suntour XCM DA w/ Alloy Legs, Adjustable Preload & Hydraulic Damping, 100mm Travel

**DRIVETRAIN:** 24-Speed w/ Shimano Acera Rear & C050 Front Derailleurs, Shimano EF50 Shifters, SR/Suntour XCC150 Forged Alloy Crankset

**BRAKES:** Radius Mechanical Disc

**WHEELS:** Alex Double Wall Alloy Rims, Alloy Disc Hubs, Kenda Komodo Tires

**COCKPIT:** MONGOOSE Oversize 31.8mm Rise Bar / MONGOOSE Alloy Stem, Alloy Post & WTB Speed V Sport Saddle



### Tyax™ Elite Women's

**FRAME:** MONGOOSE 6061 Aluminum w/ Trail Tested Geometry, Zero-Stack Headtube, M-Logo Gusset & Replaceable Derailleur Hanger

**FORK:** SR/Suntour XCM DA w/ Alloy Legs, Adjustable Preload & Hydraulic Damping, 100mm Travel

**DRIVETRAIN:** 24-Speed w/ Shimano Acera Rear & C050 Front Derailleurs, Shimano EF50 Shifters, SR/Suntour XCC150 Forged Alloy Crankset

**BRAKES:** Radius Mechanical Disc

**WHEELS:** Alex Double Wall Alloy Rims, Alloy Disc Hubs, Kenda Komodo Tires

**COCKPIT:** MONGOOSE Oversize 31.8mm Rise Bar / MONGOOSE Alloy Stem, Alloy Post & WTB Speed She Sport Saddle



### Tyax™ Comp

**FRAME:** MONGOOSE 6061 w/ Trail Tested Geometry, Zero-Stack Headtube, M-Logo Gusset & Replaceable Derailleur Hanger

**FORK:** SR/Suntour XCM w/ Alloy Legs & Crown

**DRIVETRAIN:** 24-Speed w/ Shimano Acera Rear & C050 Front Derailleurs, Shimano EF50 Shifters, SR/Suntour XCC150 Forged Alloy Crankset

**BRAKES:** ProMax Linear Pull

**WHEELS:** Alex Double Wall Alloy Rims, Alloy QR Hubs, Kenda Komodo Tires

**COCKPIT:** MONGOOSE Oversize 31.8mm Rise Bar / MONGOOSE Alloy Stem, Alloy Post & WTB Speed V Sport Saddle





### Zero G™ 26

**FRAME:** All-New Heat Treated Alloy Jump-Style  
**FORK:** SR/Suntour XCU, 80mm Travel  
**DRIVETRAIN:** 21-Speed w/ Shimano Derailleurs, SRAM MRX Twist Shifters, SR/Suntour XCC150 Alloy Crankset  
**BRAKES:** Promax Linear Pull  
**WHEELS:** Alloy Rims, 36h Hubs, Kenda Kinetics 2.35" Tires  
**COCKPIT:** 75mm Rise Bar, Alloy A-head Stem, Steel Post & MONGOOSE Jump-Style Saddle



### Zero G™ 24

**FRAME:** All-New Heat Treated Alloy Jump-Style  
**FORK:** SR/Suntour XCU, 50mm Travel  
**DRIVETRAIN:** 7-Speed w/ Shimano Rear Derailleur, SRAM MRX Twist Shifter, Prowheel 152mm Crankset w/ 36t Ring  
**BRAKES:** Promax Linear Pull  
**WHEELS:** Alloy Rims, 36h Hubs, Kenda Kinetics 2.35" Tires  
**COCKPIT:** 75mm Rise Bar, Alloy A-head Stem, Steel Post & MONGOOSE Jump-Style Saddle



### Zero G™ 20

**FRAME:** All-New Heat Treated Alloy Jump-Style  
**FORK:** SR/Suntour XCU, 40mm Travel  
**DRIVETRAIN:** 7-Speed w/ Shimano Rear Derailleur, SRAM MRX Twist Shifter, Prowheel 152mm Crankset w/ 36t Ring  
**BRAKES:** Promax Linear Pull  
**WHEELS:** Alloy Rims, 36h Hubs, Kenda Kinetics 2.35" Tires  
**COCKPIT:** 75mm Rise Bar, Alloy A-head Stem, Steel Post & MONGOOSE Jump-Style Saddle

## Mongoose Product Manager Interview



BRIAN BALDIS  
mongoose product manager

cyclists that wear suits to work each day. That's not the case at all; we're a jeans-type-of-company and I'd say about 70% of the people here ride on a daily basis. We're based in Madison, WI, so the relaxed, hard-working Midwest lifestyle is fundamental here. Oh, and dogs are welcome in the office too; they are just part of the family.

**How much control do you have as to where the brand goes?**  
 Brand strategy and direction is a company-wide decision. What happens with the brand is a collective effort.

**What are you responsible for?**  
 I handle product design and specification for all MONGOOSE BMX; as well as select MONGOOSE Adult bikes.

**How much input do you have on the product line?**  
 I work with Sales and the customer to outline the general product line-up by price point. From there, I have control over the design and spec to fit the price. I also work with our graphics team to arrange colors and decal styling for each bike; I help guide the feeling, they make it look nice.

**Where do you see the BMX industry in general headed?**  
 We have to get kids out from in front of TVs and computers. So stop reading this and go ride your damn bike!

\*interview from BMX Business News 3-29-05, by James Ayres

**Where did you come from and what's your BMX background?**  
 I've been riding since I was 13 (I'm 30 now). I started working at a bike shop in the Chicago area when I was 15. I spent a year doing ramp shows with Eric Horrell, Jamie Spritzer and Ryan Jackson, then I got hurt pretty bad and decided I wanted to pursue a career in BMX that let me ride for fun and not for financial survival. Now I ride about three or four nights a week at various parks in WI and IL. I've been into the urban MTB thing lately trying to transfer over my BMX skills.

**What's it like working there? Cool atmosphere? Corporate?**  
 Working at Mongoose is amazing; it has been great to stick with the brand as it has evolved and changed owners from Brunswick to Pacific Cycle. I think some people see us as being this massive corporate company that is managed by non-



DARREN SALSBURY  
mongoose product manager



**How much input do you have on the product line?**  
 DS: I have quite a bit of influence on the product line but I'll say that this has to come from listening to the riders and dealers, and paying attention to the various markets around the world. I've got a super cool team of engineers, graphic artists, factories, and parts makers that make it all mesh together. We have some of the best testers in the world with the Mongoose® mountain bike team, too. All of this comes together towards bringing bikes that are a blast to ride and we try to make it an awesome value.

**Any formal education for what you're doing now? If so, has it helped?**  
 DS: I have a BA in Business Management that definitely comes into play in many ways but a lot of the education required for what I do can only come from paying your dues in the bike industry. All of my work experiences and the single minded passion for bikes is what I'll credit as my extra educational experience.

**What does a typical office day consist of?**  
 DS: I think that one of the best parts of what I do is that there is no such thing as a typical day. I could be talking to Eric Carter in the morning, hitting up a lunch ride to test the latest bike parts at noon, kicking around ideas with marketing and sales in the afternoon, and talking to factories in Taiwan at night. It is perfect for my personality to get into so many different things.

**Where would you like to see Mongoose in the next couple of years?**  
 DS: I just want to keep our team focused on doing what we have been doing and I think we will make an impact on the bike biz. We have a "performance at a great value" attitude that we can keep bringing into all kinds of areas of cycling. We love everyone in the bike tribe so you'll continue to see all kinds of interesting product to satisfy dirt riders, pavement pounders, and leisure riders alike.

**What is the best part of your job?**  
 DS: Geeking out on high end bike goodies ranks pretty high on the list but I think the most rewarding part is to help make a new idea become a complete bike, get to ride test it (work out the bugs), and then a few months later see an online review from somebody that actually bought it and likes it. I love testing every type of bike too; it's important to us to make sure somebody's first entry level bike works as good for their hard earned money as the super high end rides. That's a good day at work.

**Where did you come from and what's your bike background?**  
 DS: I lived in Ohio for a good chunk of my life (they call us Buckeyes). While in college there I got bit by the mountain bike bug pretty hard. I decided to combine my passion for riding with an income. The first step was managing bike shops in the Columbus area. I then transitioned into product development and sales to bike manufacturers with Kenda tires. This eventually led me over to MONGOOSE. I guess through it all there I've explored about every kind of cycling discipline; cross country, downhill, freeride, road, trials, tandems, single speed, kind of the renaissance bike life.

**How long have you been with Mongoose?**  
 DS: It doesn't seem this long but I've been with Mongoose for about 3 years now.

**What's your "official title"?**  
 DS: Officially they call me a Senior Product Manager...I keep asking if the senior part is because I've got gray hair at 37 year old. I'm told it's something about responsibility...right.

**What are you responsible for?**  
 DS: I work on the adult range of bike dealer level bikes for Mongoose. It is a pretty broad range of product I work on, anything from dirt jump, freeride and DH rigs to bikes to cruise the neighborhood with the family.



Rockadile™ ALX Women's



## Rockadile™ ALX

**FRAME:** 6061 Alloy Hardtail w/ Disc Brake Mount, 2 Water Bottle Mounts  
**FORK:** Suntour M-2000 w/ Alloy Crown  
**DRIVETRAIN:** 21-Speed w/ Shimano Altus Rear & CO50 Front Derailleurs and SunRace Trigger Shifters, Suntour XCC-150 Alloy Crankset  
**BRAKES:** ProMax Linear Pull  
**WHEELS:** Alex Alloy Rims, Alloy Quick Release Hubs, Kenda Komodo 1.95" Tires  
**COCKPIT:** Riser Bar & Aluminum Stem; Alloy Post & MONGOOSE ATB Saddle



Rockadile™ AL Women's



## Rockadile™ AL

**FRAME:** 6061 Alloy Hardtail w/ Disc Brake Mount, 2 Water Bottle Mounts  
**FORK:** Suntour M-2000 w/ Alloy Crown  
**DRIVETRAIN:** 21-Speed w/ Shimano Derailleurs and SunRace Trigger Shifters, Suntour XCC-100 Alloy Crankset  
**BRAKES:** ProMax Linear Pull  
**WHEELS:** Alex Alloy Rims, Alloy Quick Release Hubs, Kenda Komodo 1.95" Tires  
**COCKPIT:** Riser Bar & Aluminum Stem; Alloy Post & MONGOOSE ATB Saddle



## Rockadile™ AL 24

**FRAME:** 6061 Alloy Hardtail Boys or Girls w/ Disc Brake Mount, 2 Water Bottle Mounts  
**FORK:** Suntour M-2000 w/ Alloy Crown  
**DRIVETRAIN:** 21-Speed w/ Shimano Derailleurs and SRAMMRX Grip Shifters, Suntour Alloy Crankset  
**BRAKES:** ProMax Linear Pull  
**WHEELS:** Alex Alloy Rims, Alloy Quick Release Hubs, Kenda K831 1.95" Tires  
**COCKPIT:** Riser Bar & Aluminum Stem; Alloy Post & MONGOOSE Mountain Jr. Saddle

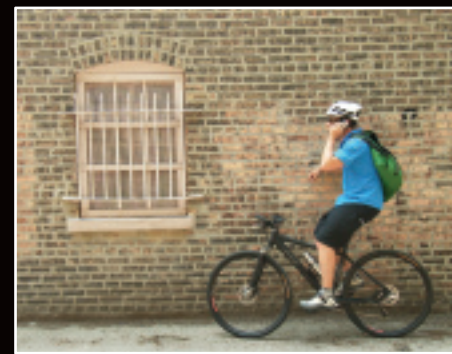


To Whom It May Concern,

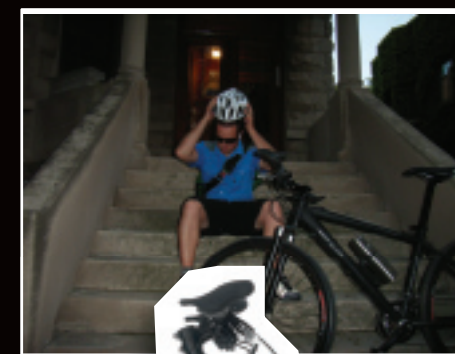
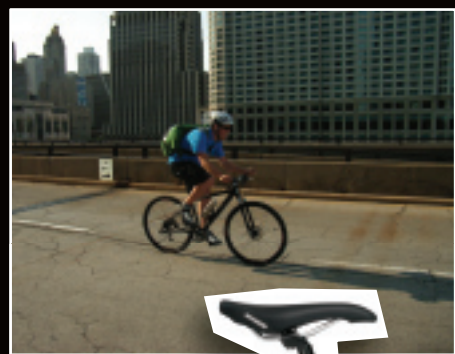
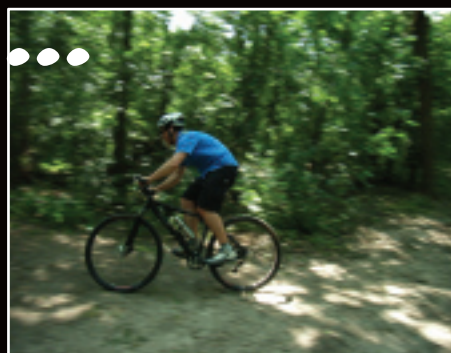
**Always wear a helmet!**

Today my son was on his way to school riding his bicycle. Unfortunately, he was wearing a helmet and saved his life. He was taken to the emergency room and later released with only a few scratches and two chipped front teeth. I am just so grateful that he was wearing his helmet, and that it protected him from serious injury. I felt compelled to write





# A day in the life of the sabrosa....



*Ride Journal entry 32, July 24th:  
The alarm went off at 5:30 AM this morning. Made my coffee. Threw on some tunes. Mounted my thermos to the downtube. And rolled. Took the long way downtown. Hit the alley as a cut through to the park. A little single track before 7 AM. Can't complain. Back out into traffic. Hit that last pothole hard. Weaved between a bus and a cab. Something about cabs makes me think they can't see bikes. Work was a drag all morning and I couldn't help but sneak a peek outside to see the weather. Who am I kidding? It doesn't matter, my Sabrosa can take anything the weather produces. But that sun is calling to me. Snuck out at*

*lunch for some single track over by the golf course. Ended up taking the long way back when a group of road bikers came by me. I just had to take the sprint. Snuck back in without the boss noticing. But then one of the other bosses needed something urgently. How many bosses do I have? Whatever. I have the lights on the Sabrosa anyway today just in case. Ended up working until 9 PM. Had to make more coffee. But the ride home was sweet. The crisp summer air reminded me of why I do this everyday. Live to work, no way. Live to ride, everyday. And with all of the options my Sabrosa offers me, there really isn't another reason.*



## Sabrosa™ 1x1

**FRAME:** All-New Heat Treated Aluminum 700c Commuter Frame, Disc-Specific w/ Eccentric BB Shell & Rack/Fender-Friendly Dropouts  
**FORK:** Saso Rigid w/ 7075 Alloy Legs & CroMo Steerer Tube  
**DRIVETRAIN:** Truvativ IsoFlow Crankset w/ 42t Chainwheel & 16t Cog  
**WHEELS:** Alex PC19 Disc Rims & Shimano Centerlock Disc Hubs, Rear Cassette, Continental City Contact 700x47c Tires  
**COCKPIT:** MONGOOSE Alloy Flat Bar & Alloy Stem, MONGOOSE Alloy Post & Velo Dual-Density Saddle

## Sabrosa™ 3x9

**FRAME:** All-New Heat Treated Aluminum 700c Commuter Frame, Disc-Specific w/ Eccentric BB Shell & Rack/Fender-Friendly Dropouts  
**FORK:** Saso Rigid w/ 7075 Alloy Legs & CroMo Steerer Tube  
**DRIVETRAIN:** 27-Speed w/ SRAM X-7 Rear & Suntour Front Derailleurs, Shimano Hollowtech Crankset x47c Tires  
**COCKPIT:** MONGOOSE Alloy Flat Bar & Alloy Stem, MONGOOSE Alloy Post & Velo Dual-Density Saddle

# Crossway®

# Crossway®



## Crossway® 450

**FRAME:** MONGOOSE Design Alloy Trekking w/ Replaceable Derailleur Hanger - 700c Wheels  
**FORK:** SR NCX-D LO w/ Magnesium Lowers, Hydraulic Damping w/ Lockout & Preload Adjust, 63mm Travel  
**DRIVETRAIN:** 24-Speed w/ SRAM SX-5 Rear Derailleur & SX-5 Trigger Shifters, FSA Alpha Drive Alloy Crankset  
**BRAKES:** Tektro Linear Pull, Alloy Levers with Kraton Inserts  
**WHEELS:** WTB DX23 Double Wall Alloy Rims w/ Sealed Alloy Quick Release Hubs, Continental Contact 37c Comfort Tires w/ Flat Protection  
**COCKPIT:** 30mm Alloy Rise Bar & Alloy A-head Stem, Alloy Seatpost w/ MONGOOSE Performance Hybrid Saddle w/ Super Soft Foam & Dual Density Base



Crossway® 250 Women's

## Crossway® 250

**FRAME:** MONGOOSE Design Alloy Trekking w/ Replaceable Derailleur Hanger - 700c Wheels  
**FORK:** Steel w/ Lo-Rider Rack Mounts  
**DRIVETRAIN:** 21-Speed w/ Shimano derailleurs and SunRace Trigger Shifters, SR/Suntour XCC-T208 Forged Alloy Crankset  
**BRAKES:** ProMax Linear Pull w/ Alloy Levers  
**WHEELS:** Alex Z1000 Alloy Rims w/ Double Alloy Quick Release Hubs, Continental Contact 37c Comfort Tires w/ Flat Protection  
**COCKPIT:** 30mm Rise Bar & Alloy Quill Stem, Alloy Seatpost w/ MONGOOSE Comfort Design Saddle w/ Super Soft Foam & Dual Density Base



Crossway® 350 Women's



## Crossway® 350

**FRAME:** MONGOOSE Design Alloy Trekking w/ Replaceable Derailleur Hanger - 700c Wheels  
**FORK:** RST Neon ML w/ Adjustable Preload & Lockout 45mm Travel  
**DRIVETRAIN:** 24-Speed w/ Shimano Acera & C102 Derailleurs & EF-50 Shifters, Suntour XCC-T208 Forged Alloy Crankset  
**BRAKES:** ProMax Linear Pull w/ Shimano EF-50 Levers  
**WHEELS:** Alex Double Wall Alloy Rims w/ Sealed Alloy Quick Release Hubs, Continental Contact 37c Comfort Tires w/ Flat Protection  
**COCKPIT:** 30mm Rise Bar & Alloy Quill Stem, Alloy Seatpost w/ MONGOOSE Comfort Design Saddle w/ Super Soft Foam & Dual Density Base



P. JOHN LADWIG

## Switchback® SX

**FRAME:** 6061 Alloy Comfort w/ 2 Water Bottle Mounts, Replaceable Derailleur Hanger – 26" Wheels  
**FORK:** RST Suspension w/ Mechanical Lockout, 75mm Travel  
**DRIVETRAIN:** 21-Speed w/ Shimano Acera Rear Derailleur & SunRace Trigger Shifters, SR/Suntour XCC-T208 Forged Alloy Crankset  
**BRAKES:** Linear Pull Alloy Brakes, Alloy Levers w/ Comfort Rubber Inserts  
**WHEELS:** Alex Alloy Rims, Alloy Quick Release Sealed Hubs, Continental Traffic 1.95" Comfort Tires  
**COCKPIT:** Riser Handlebars, Alloy Quill Stem, Alloy Seatpost w/ MONGOOSE Comfort Design Saddle w/ Super Soft Foam & Dual Density Base



Switchback® SX Women's



“Highly rated by an independent, unnameable, testing agency”

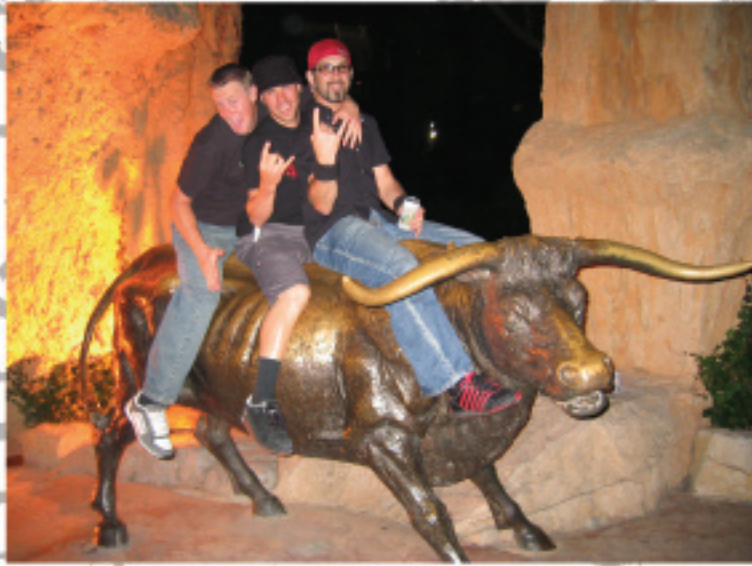
## Allycat®

- 20" ALLOY WHEEL
- COMFY PADDED SADDLE
- HIGH VISIBILITY SAFETY FLAG (NOT PICTURED)
- VERSATILE QUICK-RELEASE BRACKET
- PATENTED FOLDING MECHANISM FOR EASY STORAGE

## MONGOOSE

**PRO CLASS** Mongoose® Pro Class bikes, built with team-tested frames and components, are built for riders, by riders and are only sold by qualified retailers. We've been doing it better than anyone since 1974.

# photo send inz



Ride 'em cowboys.



Check this out - our bikes are too hot for pants!



It's a moo for Mongoose

I just wanted to thank all who sent us the great, real lifestyle photos. All of these photos were sent to us by our very own riders. Which I may add are some of the best rider lifestyle shots I have seen in a long time.

WATCH THE BIRBY



Power Rangers meet Planet of the Apes



Simon giving us the bird.

SMILE

## Legion™

- 100% CrMo Team Dirt Jump Frame & Fork; 20.75" TT
- 3pc 175mm Tubular CrMo Sealed Bearing Crankset w/ Midsize Integrated BB
- SNAFU "Concave" Pedals & "Dunbar" Saddle
- 36h F Alloy Hub w/ 3/8" CrMo Axle, 36h Odyssey Hazard Cassette R. Hub w/ 14mm CrMo Axle
- Micro-Drive Drivetrain w/ 30t CNC Alloy Chainring, 11t Odyssey Driver
- Sun RhinoLite XL 36h Rims, Black front / Chrome rear
- Shadow Belter 2.1" (F) & Undertone 1.85" (R) Tires
- Tektro FX-15 Rear U-Brake & SNAFU C-Lever, Hinged
- CrMo 2pc Team Handlebars, Shadow Ol' Dirt Grips



## Fraction™

- 100% CrMo Team Street/Park Frame & Fork; 20.75" TT
- Micro-Drive Drivetrain w/ 36t Alloy CNC Chainring, 13t Cog
- CrMo 2pc Team Handlebars, Shadow Ol' Dirt Grips
- 36h F Alloy Hub w/ 3/8" CrMo Axle, 36h Odyssey Hazard Cassette R. Hub w/ 14mm Hollow CrMo Axle
- Sun Black Box Rims, Black 36h front / Chrome 36h rear
- SNAFU "Concave" Pedals & "Dunbar" Saddle
- 3pc Tubular CrMo 175mm Sealed Bearing Crankset w/ Midsize Integrated BB
- Tektro FX-11 Rear U-Brake & SNAFU C-Lever, Hinged
- Shadow Belter 2.1" (F) & Undertone 1.85" (R) Tires



## Shield™

- 100% CrMo Team Vert/Park Frame & Fork; 20.75" TT
- CrMo 2pc Team Handlebars, Shadow Ol' Dirt Grips
- Micro-Drive Drivetrain w/ 36t Alloy Chainring, 13t Cog
- 36h F Alloy Hub w/ 3/8" CrMo Axle, 48h Odyssey Hazard Cassette R. Hub w/ 14mm Hollow CrMo Axle
- SNAFU "Concave" Pedals & "Dunbar" saddle
- 3pc 175mm Tubular CrMo Sealed Bearing Crankset, Midsize Integrated BB
- Shadow Undertone Tires
- Tektro FX-570 R U-Brake & SNAFU C-Lever, Hinged
- Sun Black Box Rims, Black 36h front / Chrome 48h rear





# TRAIL



## Expert™

- 100% CrMo Trail Frame & Fork
- MONGOOSE Alloy Hubs w/ 14mm CrMo Axles — Rear Cassette; Sun ZX25 36H (F) / 48H (R) Rims
- 3pc Tubular CrMo 175mm Crankset; Sealed Bearing BB
- SNAFU Dirt Box 2.125" (F) & Knob Job (R) 1.95" Dirt Tires
- CNC Alloy 36t Micro-drive Chainring, 13t Cog
- Tektro Alloy U-Brake & Hinged Alloy Lever
- SST ORYG, 1 pr. Axle Pegs



## Brawler®

- CrMo Front Triangle Trail Frame, CrMo Fork Legs & Steerer
- Mongoose® Alloy Hubs w/ 14mm CrMo Axles; Alex F303 36H (F) / 48H (R) Rims
- Tektro Alloy U-Brake; SST ORYG
- Kenda Kurb 2.25" Tires
- 3pc Tubular CrMo 175mm Crankset; 39t Chainring / 14t Freewheel
- 1pr. Axle Pegs



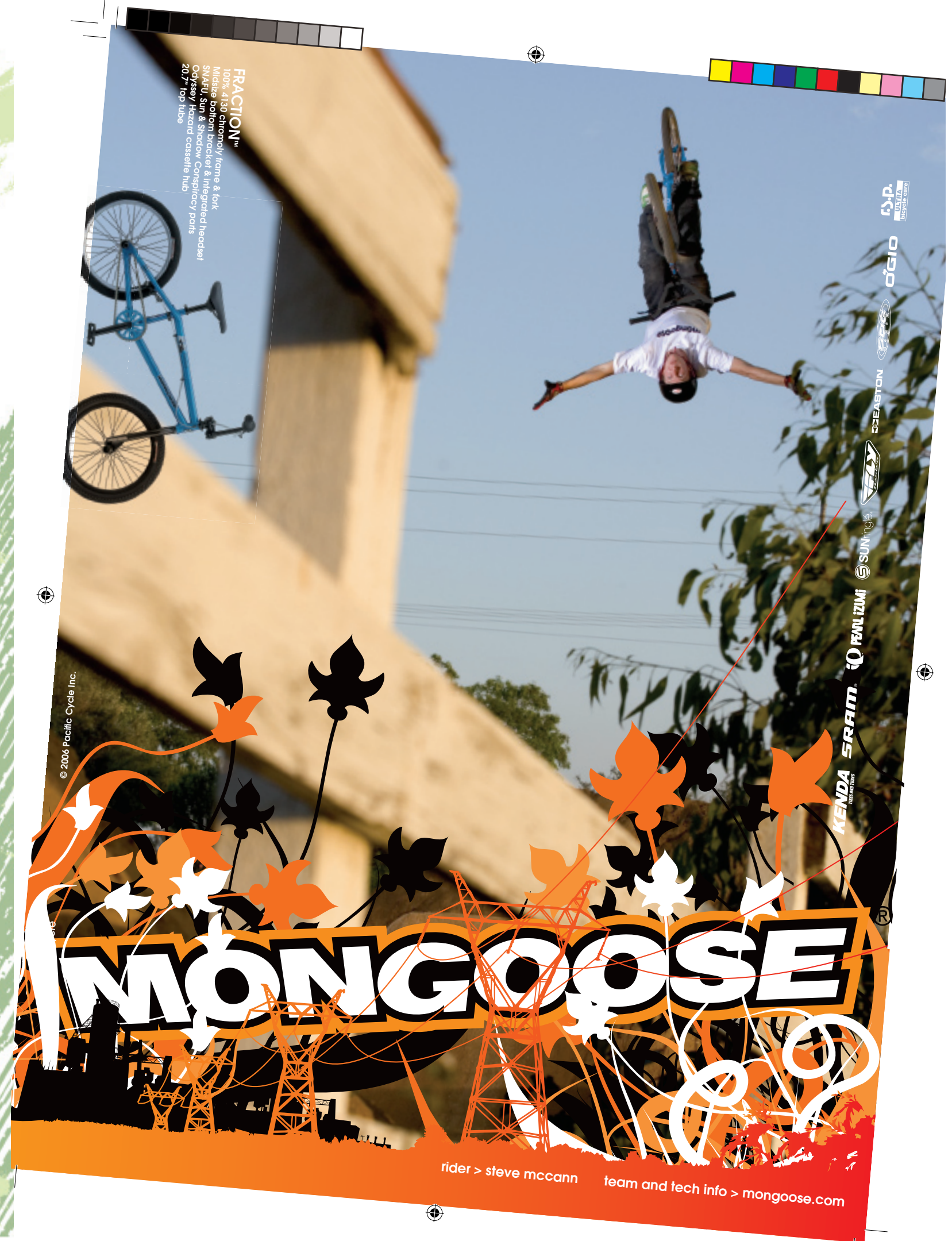
## Menace®

- Trail Frame, CrMo Fork Steerer
- Kenda 2.25" Tires
- 3pc Tubular CrMo 175mm Crankset, 39t Chainring / 14t Freewheel
- Tektro Alloy U-Brake; SST ORYG
- 1pr. Axle Pegs
- MONGOOSE Hubs w/ 14mm CrMo Axles; Alex F303 36H (F) 48H (R) Rims

© 2006 Pacific Cycle Inc.



**FRACTION™**  
100% 4130 chromoly frame & fork  
Midsize bottom bracket & integrated headset  
SNAFU, Sun & Shadow Conspiracy parts  
Odyssey Hazard cassette hub  
20.7" top tube



# MONGOOSE

rider > steve mccann team and tech info > [mongoose.com](http://mongoose.com)

KENDA SRAFIM PEARLIZUMI SUN RINGE EASTON OGIO



## Villain™

- Full CrMo Front Triangle Street/Freestyle Frame, CrMo Fork Legs & Steerer
- 3pc Tubular CrMo 175mm Crankset, 39t Chainring / 14t ACS Freewheel
- Tektro F&R U-Brakes; SST ORYG
- Mongoose® Hubs w/ 14mm CrMo Axles; Alex F303 36H (F) / 48H (R) Rims
- 2pc Handlebars
- Mongoose® 2.0" Freestyle Tires
- 3pc Tubular CrMo 175mm Crankset, 39t Chainring / 14t Freewheel

## Mischief™

- Street/Freestyle Frame, CrMo Fork Steerer
- 3pc Tubular CrMo 175mm Crankset, 39t Chainring / 14t Freewheel
- Mongoose® Hubs w/ 14mm CrMo Axles; Alex F303 36H (F) / 48H (R) Rims
- 2pc Handlebars
- Tektro F & R U-Brakes; SST ORYG
- Mongoose® 2.0" Freestyle Tires

## Mischief™ Mag

- Street/Freestyle Frame, CrMo Fork Steerer
- Mongoose® 3-Spoke Wave Mags w/ 3/8" Axles
- Mongoose® 2.0" Freestyle Tires
- Tektro F & R U-Brakes; SST ORYG
- 2pc Handlebars
- Forged CrMo 175mm Crankset, 44t Chainring / 16t Freewheel

## Subject™

- Street/Freestyle Frame
- Tektro R U-Brake, 2 pr Axle Pegs
- 48h Hubs w/ CrMo Axles; Alloy 48h Rims
- 2pc Handlebars
- Mongoose® 2.0" Freestyle Tires
- Forged CrMo 175mm Crankset, 44t Chainring / 16t Freewheel

## Pit Crew™

- Downsized Freestyle Frame, 16" Wheels
- Tektro Alloy U-Brakes, SST Brake Rotor
- 2pc Mini Handlebars; Alloy Rims
- Mongoose® Comp-style 2.125" Tires
- 3pc 115mm Tubular Crankset, 36t Chainring/16t ACS Freewheel
- 1pr. Axle Pegs



rider: steve mocann

# JUVENILE



## Motivator™

- Junior Trail Frame
- 1pc 170mm Crankset, 42t Chainring / 16t ACS Freewheel
- Tekro Alloy Linear Pull Rear Brake
- Mongoose® 2.125" Dirt Tires
- 2pc Handlebars; Alloy Rims



## Motivator™ Mini

- Compact Junior Trail Frame
- Mongoose® 2.125" Dirt Tires
- Tekro Linear Pull Rear Brake/Coaster Brake
- 1pc 140mm Crankset, 36t Chainring / 18t Coaster Brake
- 2pc Mini Handlebars; Alloy Rims

# SPECIFICATIONS: SUBJECT TO CHANGE WITHOUT NOTICE

	GRAVITY BLACK DIAMOND		EC SIGNATURE SERIES	ALL MOUNTAIN ENDURO XC TEOCALI				ENDURO XC CANAAN	
MODEL	TRIPLE	DOUBLE	EC-D	TEOCALI SUPER	TEOCALI ELITE	TEOCALI ELITE WOMEN'S	TEOCALI COMP	CANAAN TEAM	CANAAN ELITE
COLORS	GLOSS WHITE	KHAKI	PEARL WHITE/TEAM ORANGE	LIME GOLD	BONE	GLOSS WHITE	SUNSET ORANGE	STEEL BLUE	SILVER
SIZES	S, M, L	S, M, L	S/M & M/L	S, M, L	S, M, L	S, M, L	S, M, L	S, M, L, XL	S, M, L, XL
FRAME	FREEDRIVE FR 6.7/7.5" (170/190 MM) TRAVEL	FREEDRIVE FR 6.7/7.5" (170/190 MM) TRAVEL	FREEDRIVE DOWNHILL 2.8, 4" (109/214 MM) TRAVEL 150x12 MM ROCKSHOX MAXLE REPAIRABLE DROPOUT	FREEDRIVE ALL MOUNTAIN 4.75/5.75" (124/145 MM) TRAVEL	FREEDRIVE ALL MOUNTAIN 4.75/5.75" (124/145 MM) TRAVEL	FREEDRIVE ALL MOUNTAIN 4.75/5.75" (124/145 MM) TRAVEL	FREEDRIVE ALL MOUNTAIN 4.75/5.75" (124/145 MM) TRAVEL	FREEDRIVE XC/ENDURO 3.9" (100 MM) TRAVEL, BUTTED ALLOY FRAME	FREEDRIVE XC/ENDURO 3.9" (100 MM) TRAVEL, BUTTED ALLOY FRAME
FORK	MARZOCCHI 6AS.1 IATA, DUAL AIR SPRING, AIR TRAVEL ADJUST 140-180 MM, RC2 REBOUND AND COMPRESSION ADJUST	ROCKSHOX DOMAIN 318, 180 MM TRAVEL, MOTION CONTROL WITH SPEED STACK, REBOUND ADJUST AND 20 MM MAXLE	ROCKSHOX BOCKER TEAM 203 MM TRAVEL W/ MOTION CONTROL DAMPING WITH EXTERNAL LOW & HIGH SPEED COMPRESSION AND REBOUND ADJUST.	ROCKSHOX PIKE 454 DUAL AIR, 140 MM TRAVEL, INTERNAL MOTION CONTROL, POPLOC, REMOTE, MAXLE 20 MM GR.	ROCKSHOX PIKE 409, 95-140 MM TRAVEL, INTERNAL MOTION CONTROL, LOW SPEED COMPRESSION TO LOCK, 20 MM MAXLE	ROCKSHOX PIKE 409, 95-140 MM TRAVEL, INTERNAL MOTION CONTROL, LOW SPEED COMPRESSION TO LOCK, 20 MM MAXLE	SR SUNTOUR EPICON, 140 MM TRAVEL, AIR SPRING, MAGNESIUM SLIDER, 32 MM ALLOY STANCHION, REBOUND ADJUST	FOX F100X, 100 MM TRAVEL, AIR SPRING, REBOUND, AND INERTIA VALVE PLATFORM	FOX F100X, 100 MM TRAVEL, AIR SPRING, REBOUND AND LOCK OUT.
REAR SHOCK	FOX DHX AIR-3.0 COIL OVER W/PIGGY BACK, WITH ADJUSTABLE PROPEL DAMPING, BOOST VALVE, TUNING RANGE, REBOUND AND PRELOAD	FOX DHX AIR-3.0 AIR SPRING W/PIGGY BACK, WITH PROPEL DAMPING AND BOOST VALVE, ADJUSTABLE TUNING RANGE, REBOUND ADJUST (9.0X2.75")	FOX DHX-5.0 COIL OVER W/PIGGY BACK, WITH ADJUSTABLE PROPEL DAMPING, BOOST VALVE, TUNING RANGE, REBOUND AND PRELOAD, (9.5X2.0")	ROCKSHOX MOTION CONTROL 3.3 AIR SHOCK WITH ADJUSTABLE MOTION CONTROL, 3 POSITION PLATFORM AND REBOUND DAMPING (7.5X2.0")	ROCKSHOX MC 3.1 AIR SHOCK WITH ADJUSTABLE MOTION CONTROL AND REBOUND (7.5X2.0")	ROCKSHOX MC 3.1 AIR SHOCK WITH ADJUSTABLE MOTION CONTROL AND REBOUND (7.5X2.0")	SR SUNTOUR EPICON AIR SHOCK WITH REBOUND ADJUST (7.5X2.0")	FOX RP23, AIR SPRING, 3 SETTING PROPEL AND NO PLATFORM SETTING, REBOUND ADJUST, (6.5X1.5")	FOX RP3, THREE POSITION PROPEL, AIR SPRING REBOUND ADJUST, (6.5X1.5")
CRANKSET / CHAINWHEEL	FSA GRAVITY, HOLLOW FORGED ARMS, 36T W/ BASH GUARD	FSA GAP 36T W/ BASH GUARD, 2 PC	TRUVATIV HOWITZER 38T ALLOY RING	FSA AFTERBURNER 22/32/44T ALLOY RINGS, HOLLOW FORGED ARMS WITH INTEGRATED SPOINLE	TRUVATIV FBREX 22/32/44T ALLOY RINGS, FORGED ARMS WITH INTEGRATED SPOINLE	TRUVATIV FBREX 22/32/44T ALLOY RINGS, FORGED ARMS WITH INTEGRATED SPOINLE	FSA ALPHA DRIVE 22, 32 STEEL - 44T ALLOY RINGS, FORGED ARMS	FSA CARBON PRO TEAM ISSUE, 2 PC MONOCOQUE ARMS, 22/32/44T ALLOY	FSA AFTERBURNER, HOLLOW FORGED 2PC, 22/32/44T ALLOY
BB	FSA MEGA EXD EXTERNAL BEARING	FSA MEGA EXD EXTERNAL BEARING	TRUVATIV HOWITZER TEAM EXTERNAL BEARING	FSA MEGAEXD, 2 PC INTEGRATED SPOINLE W/ EXTERNAL BEARINGS	TRUVATIV GIGA X PIPE, 2 PC INTEGRATED SPOINLE W/ EXTERNAL BEARINGS	TRUVATIV GIGA X PIPE, 2 PC INTEGRATED SPOINLE W/ EXTERNAL BEARINGS	FSA POWERDRIVE 8 T00TH SPLINED, SEALED BEARING, ALLOY CLIPS	FSA MEGAEXD EXTERNAL BEARING	FSA MEGAEXD EXTERNAL BEARING
PEDALS	XPED0 SEALED BEARING ALLOY PLATFORM W/ REPLACEABLE STEEL PINS	ALLOY PLATFORM W/ REPLACEABLE STEEL PINS	N/A	CRANK BROTHERS SMARTY CLIPLESS	CRANK BROTHERS SMARTY CLIPLESS	CRANK BROTHERS SMARTY CLIPLESS	M-LOGO ALLOY PLATFORM	CRANK BROTHERS CANDY C CLIPLESS	CRANK BROTHERS SMARTY CLIPLESS
FRT. DER.			N/A	DEORE	DEORE	DEORE		SHIMANO DEORE XT	SHIMANO DEORE XT
RR. DER.	SRAM X.9 MID CAGE	SRAM X.7 MID CAGE	SRAM X.9 MID CAGE	SHIMANO DEORE XT	SHIMANO DEORE XT	SHIMANO DEORE XT SGS	SRAM SX-5.0 LONG CAGE	SHIMANO X.0, CARBON CAGE	SHIMANO DEORE XT
SHIFTERS	SRAM X.9 IMPULSE TRIGGER SHIFTERS, W/ MATCHMAKER JUICY SHIFTER/BRAKE MOUNT	SRAM X.7 IMPULSE TRIGGER	SRAM X.9 IMPULSE TRIGGER	SRAM X.9 MEDIUM CAGE	SHIMANO LX RAPIDFIRE	SHIMANO LX RAPIDFIRE	SRAM SX-5.0 IMPULSE TRIGGER	SRAM X.0 IMPULSE TRIGGER SHIFTERS, W/ MATCHMAKER JUICY BRAKE MOUNT	SHIMANO DEORE XT RAPIDFIRE
FREEWHEEL	SRAM PG-990 11-34T 9 SPEED	SRAM PG-970 11-34T 9 SPEED	SRAM PG-990 12-26T 9 SPEED	SRAM X.9 IMPULSE TRIGGER SHIFTERS, W/ MATCHMAKER JUICY BRAKE MOUNT	SRAM PG-950 11-34T 9 SPEED	SRAM PG-950 11-34T 9 SPEED	SRAM PG-950 11-34 9 SPEED	SRAM PG-990 11-32 9 SPEED	SRAM PG-970 11-32 9 SPEED
CHAIN	KMC Z-9900 SILVER	KMC Z-9900 SILVER/BLACK	KMC Z-9900 SILVER	SRAM PG-990 11-34T 9 SPEED	KMC Z-9900	KMC Z-9900	KMC Z-9900	KMC Z-9900	SHIMANO HG-73
RIMS	WTB LASER DISC FR, 32H	WTB SPEEDDISC XL, 32H	SUN MIX TEAM BLUE 32H	WTB SPEEDDISC ALL MOUNTAIN, 32H	WTB SPEEDDISC ALL MOUNTAIN, 32H	WTB SPEEDDISC ALL MOUNTAIN, 32H	WTB SPEEDDISC ALL MOUNTAIN, 32H	NO TUBES ZTR OLYMIC DISC TUBELESS	WTB LASERDISC XC 28H
TIRES	KENDA 26X2.5 NEVEGAL FR, STICK-E RUBBER & PINCH FLAT PROTECTION	KENDA 26X2.5 NEVEGAL FR, STICK-E RUBBER & PINCH FLAT PROTECTION	KENDA 26X2.5 NEVEGAL DH CASING W/ STICK-E RUBBER	WTB LASERDISC TRAIL 28H	KENDA 26X2.35 F / 2.10R NEVEGAL DTC FOLDING BEAD	KENDA 26X2.35 F / 2.10R NEVEGAL DTC FOLDING BEAD	KENDA 26X2.35 F / 2.10R NEVEGAL DTC FOLDING BEAD	KENDA KARMA DTC FOLDING BEAD 26X2.0	KENDA KARMA DTC FOLDING BEAD 26X2.0
FRONT HUB	WTB LASER DISC SUPER DUTY 20 MM THRU AXLE, 32H	20 MM THRU AXLE DISC HUB, 32H, BLACK AND	SUN RINGLE ABBAH S05 20 MM THRU AXLE, 32H	KENDA 26X2.35 F / 2.10R NEVEGAL DTC FOLDING BEAD	WTB 20 MM DISC 32H	WTB 20 MM DISC 32H	ALLOY DISC COMPATIBLE Q/R 32H SANDBLAST BLACK FINISH	RINGLE DIRT FLEA DISC / 32H	WTB LASERDISC LITE 28H
REAR HUB	WTB LASER DISC SUPER DUTY 150x12 MM THRU AXLE, CASSETTE	150x12 MM THRU AXLE, CASSETTER REAR, 32 HOLE	SUN RINGLE ABBAH S05 150x12 MM THRU AXLE, 32H	WTB LASERDISC SUPER DUTY 20 MM THRU AXLE 32H	WTB CASSETTE DISC, 32H	WTB CASSETTE DISC, 32H	ALLOY CASSETTE DISC COMPATIBLE Q/R 32H SANDBLAST BLACK FINISH	RINGLE DIRT FLEA DISC ALLOY CARRIER / 32H	WTB LASERDISC LITE 28H, 9 SPEED CASSETTE
SPOKES	WTB STAINLESS STEEL	STAINLESS STEEL	STAINLESS STEEL	WTB LASERDISC LITE REAR CASSETTE, 135 MM, 28H	WTB STAINLESS STEEL	WTB STAINLESS STEEL	STAINLESS STEEL	DT SWISS 14/15 GA BLACK	WTB STAINLESS STEEL
NIPPLES	BRASS UCP	BRASS UCP	BRASS UCP	WTB STAINLESS STEEL	BRASS UCP	BRASS UCP	BRASS UCP	CNC ALLOY BLACK	BRASS UCP
FRONT BRAKE	AYD JUICY 7 HYDRAULIC DISC, 203 MM ROTOR	HAYES HF8-9 W/ 8" ROTOR	AYD JUICY 7 W/ 8" ROTOR	BRASS UCP	HAYES HF9X HYDRAULIC DISC, 180 MM ROTOR	HAYES HF9X HYDRAULIC DISC, 180 MM ROTOR	HAYES HF9X HYDRAULIC DISC, 180 MM ROTOR	TEXTRO AURIGA COMP, 180 MM ROTOR	AYD JUICY ULTIMATE HYDRAULIC DISC, 160 MM ROTOR
REAR BRAKE	AYD JUICY 7 HYDRAULIC DISC, 203 MM ROTOR	HAYES HF8-9 W/ 8" ROTOR	AYD JUICY 7 W/ 8" ROTOR	AYD JUICY 7 HYDRAULIC DISC, 160 MM ROTOR	HAYES HF9X HYDRAULIC DISC, 160 MM ROTOR	HAYES HF9X HYDRAULIC DISC, 160 MM ROTOR	HAYES HF9X HYDRAULIC DISC, 160 MM ROTOR	TEXTRO AURIGA COMP, 160 MM ROTOR	AYD JUICY ULTIMATE HYDRAULIC DISC, 160 MM ROTOR
BRAKE LEVERS	AYD JUICY 7 WITH MATCHMAKER CLAMP	HAYES HF8-9 WITH BEL LEVER	AYD JUICY 7	AYD JUICY 7 HYDRAULIC DISC, 160 MM ROTOR	HAYES HF9X W/ BEL LEVER	HAYES HF9X W/ BEL LEVER	HAYES HF9X W/ BEL LEVER	TEXTRO AURIGA COMP	AYD JUICY ULTIMATE, MATCHMAKER CLAMP
HANDLEBAR	EASTON EA70 L0 RISE, 31.8 MM	EASTON EA50 L0 RISE, 31.8 MM	EASTON EA70 L0 RISE, 25.4 MM	AYD JUICY 7 HYDRAULIC DISC, MATCHMAKER CLAMP	EASTON EA80 L0 RISE, 31.8 MM	EASTON EA80 L0 RISE, 31.8 MM	EASTON EA30 L0 RISE, 31.8 MM	MONGOOSE 31.8 CLAMP, RISER BAR	EASTON MONKEY LIFE SL CNT, L0 RISE, 25.4 MM
STEM	EASTON HAVOC DH/TR	EASTON VICE DH/FR	EASTON HAVOC DH, 50 MM	EASTON VICE ALL MOUNTAIN, 6" ANGLE	EASTON VICE ALL MOUNTAIN, 6" ANGLE	EASTON VICE ALL MOUNTAIN, 6" ANGLE	MONGOOSE 31.8 STEM	EASTON EA70, 6" ANGLE	EASTON EA50 6" ANGLE
GRIPS	MONGOOSE HALF-FLANGE M-LOGO LOCK ON GRIP	MONGOOSE HALF-FLANGE M-LOGO LOCK ON GRIP	MONGOOSE HALF-FLANGE M-LOGO LOCK ON GRIP	EASTON VICE ALL MOUNTAIN, 6" ANGLE	MONGOOSE NO-FLANGE M-LOGO LOCK ON GRIP	MONGOOSE NO-FLANGE M-LOGO LOCK ON GRIP	MONGOOSE NO-FLANGE M-LOGO LOCK ON GRIP	MONGOOSE NO-FLANGE M-LOGO LOCK ON GRIP	MONGOOSE NO-FLANGE M-LOGO LOCK ON GRIP
HEADSET	1.5" TO 1.1/8" CONVERSION, INTERNAL ANGULAR CONTACT BEARING	1.5" TO 1.1/8" CONVERSION, INTERNAL ANGULAR CONTACT BEARING	FSA ORBIT EXTREME W/ DEEP INSERTION ALLOY CLIPS, CARTRIDGE BEARING	MONGOOSE NO-FLANGE M-LOGO LOCK ON GRIP	FSA 25-4 ANGULAR CONTACT BEARING	FSA 25-4 ANGULAR CONTACT BEARING	FSA 25-4 ANGULAR CONTACT BEARING	FSA IS2 INTEGRATED	FSA IS2 INTEGRATED
SADDLE	SDG BEL AIR SUPER TOUGH	SDG BEL AIR SUPER TOUGH	SDG BEL AIR SUPER TOUGH	WTB TEAM, ANGULAR CONTACT BEARING	KORE ENDURO I-BEAM	WTB DEVA COMP HI-PADDING	WTB PURE V SPORT	KORE I-BEAM MOUNTAIN SADDLES	KORE I-BEAM MOUNTAIN SADDLES
SEAT POST	TITEC KNOCKSCOOPER I-BEAM TELESCOPING POST	TITEC KNOCKSCOOPER I-BEAM TELESCOPING POST	SDG I-BEAM 2014 ALLOY POST	KORE ENDURO I-BEAM	KORE I-BEAM RACE, 2014 ALLOY, 31.6 MM	M-LOGO ALLOY W/ DOUBLE BOLT INTEGRAL HEAD 300/350MM LENGTH 31.6MM	M-LOGO ALLOY W/ DOUBLE BOLT INTEGRAL HEAD 300/350MM LENGTH 31.6MM	KORE I-BEAM ELITE CARBON, 27.2 MM	KORE I-BEAM RACE, 2014 ALLOY, 27.2 MM
SEAT CLAMP	ALLOY Q/R	ALLOY Q/R	ALLOY Q/R	KORE I-BEAM RACE, 2014 ALLOY, 31.6 MM	ALLOY Q/R	ALLOY Q/R	ALLOY Q/R	CNC ALLOY W/BOLT	CNC ALLOY W/BOLT
EXTRAS	MRP SYSTEM 3 CHAIN GUIDE SYSTEM	MRP SRS CHAIN GUIDE SYSTEM	MRP SYSTEM 3 CHAIN KEEPER	ALLOY Q/R	ALLOY Q/R			"NO TUBES" TUBELESS CONVERSION KIT	



CLASSIC MOTORCYCLE STYLING.  
COMPLETE WITH GAS TANK.  
FULL-WRAP FENDERS.  
REAR-VIEW MIRRORS & DECORATIVE HEADLIGHT.



- WELDED STEEL CONSTRUCTION WITH CUSTOM "FLAME" PAINT JOB & WIDE STANDING DECK.
- DUAL CROWN FORK WITH ALLOY STEM.
- FULLY-ADJUSTABLE HIGH-BACK SADDLE.

## Vivid™

- Girls BMX Street Style Frame
- Forged Steel 152mm Crankset, 44t Chainring / 18t Coaster Brake Cog
- Alloy Rims & Mongoose® Tires
- Alloy Linear Pull Brake and Alloy Lever
- Kickstand 3-pc Safety Padset



## DIRT JUMP

	TRIAL	THUNDERBALL	FIREBALL
COLORS	MINT OR BONE	EXPLORING KHAKI	PITCH BLACK
SIZES	ONE SIZE	S/M M/L	S/M M/L
FRAME	4130 BUTTED CHROMOLY, 24/26 WHEEL COMPATIBLE	FLAT TOP TUBE TECHNOLOGIES 6061 ALLOY, DIRT JUMP	FLAT TOP TUBE TECHNOLOGIES 6061 ALLOY, DIRT JUMP
FORK	MARZOCCHI DIRT JUMPER 3, 100 MM TRAVEL, AIR ASSIST, EXTERNAL REBOUND ADJUSTMENT	SR SUNTOUR DURED D, 100 MM TRAVEL, AIR ASSIST, REBOUND ADJUSTMENT	SR SUNTOUR DURED D, 100 MM TRAVEL, HYDRAULIC DAMPING
REAR SHOCK	N/A	N/A	N/A
CRANKSET	SPC HEAT TREATED TUBULAR CR-MO B SPLINE INTERFACE W/ SST CHAINRING	TRUVATIV HUSSEFFEL FORGED ALLOY W/ 36/24T AND BASHGUARD	FSA ALPHA DRIVE SHAK, 36T WITH PC BASH GUARD AND CHROMOLY PEDAL INSERTS
BB	SEALED CARTRIDGE BEARING EURO, B SPLINE CR-MO SPOINLE	TRUVATIV HOWITZER XR EXTERNAL BEARING	FSA POWERDRIVE BT SPLINED AXLE AND CARTRIDGE BEARINGS
PEDALS	M-LOGO ALLOY PLATFORM	M-LOGO ALLOY PLATFORM	M-LOGO ALLOY PLATFORM
FRT DER.	N/A	SHIMANO ALIVIO	
RR DER.	N/A	SR SUNTOUR DURELUX G18 SHORT CAGE	SR SUNTOUR XCM660-6TB SHORT CAGE
SHIFTERS	N/A	SRAM X7 TRIGGER SHIFTER	SRAM SX-5.0 TRIGGER SHIFTER, 8 SPEED
FREEWHEEL	15T COG	SRAM PG-830 11-32T BSP	SRAM PG-830 11-32T BSP
CHAIN	KMC Z-510	KMC Z-72	KMC Z-72
RIMS	SUN DITCH WITCH 36 HOLE	SUN SINGLE TRACK 36 HOLE	JALCO DIZZ 36 HOLE, 28 MM WIDE DOUBLE WALL
TIRES	FRONT: KENDA K RAD 26X2.3 KINFTION 26X2.3	REAR: KENDA FRONT: KENDA BLUE GROOVE 26X2.35 NEVEGAL 26X2.35	REAR: KENDA KENDA 26X2.35 SMALL BLOCK EIGHT
FRONT HUB	ALLOY DISC Q/R W/ CR-MO BOLT IN STYLE AXLE	ALLOY DISC 36H SAND BLAST BLACK	ALLOY DISC 36H SAND BLAST BLACK
REAR HUB	FORMULA ALLOY SINGLE SPEED CASSETTE W/ CR-MO AXLE AND 4 SEALED BEARINGS	ALLOY DISC 36H CASSETTE SAND BLAST BLACK	ALLOY DISC 36H CASSETTE SAND BLAST BLACK, BUTTED AXLE
SPOKES	STAINLESS STEEL, BLACK	STAINLESS STEEL	STAINLESS STEEL, BLACK
NIPPLES	BRASS UCP	BRASS UCP	BRASS UCP
FRONT BRAKE	HAYES MX4 MECHANICAL DISC, 160 MM ROTOR	HAYES MX-2 MECHANICAL DISC	RADIUS MEC7 7.0 MECHANICAL DISC, 160 MM ROTOR
REAR BRAKE	HAYES MX4 MECHANICAL DISC, 160 MM ROTOR	HAYES MX-2 MECHANICAL DISC	RADIUS MEC7 7.0 MECHANICAL DISC, 160 MM ROTOR
BRAKE LEVERS	TEXTRO ML-330 DIRT JUMP WITH FORGED LEVER	HAYES HML	TEXTRO ML-330 DIRT JUMP WITH FORGED LEVER
HANDLEBAR	MONGOOSE PNYBAR, CHROMOLY BAR, 50 MM RISE	ATOM LAB TRAILKING, HEAT TREATED CHROM W/ 2" RISE	MONGOOSE PNYBAR, CHROMOLY BAR, 50 MM RISE
STEM	MONGOOSE ALLOY BMX, 22.2MM CLAMP	MONGOOSE ALLOY BMX, 22.2MM CLAMP	MONGOOSE ALLOY BMX, 22.2MM CLAMP
GRIPS	MONGOOSE HALF-FLANGE M-LOGO LOCK ON GRIP	MONGOOSE M-LOGO NO-FLANGE GRIP	MONGOOSE HALF-FLANGE M-LOGO LOCK ON GRIP
HEADSET	TH HAMMER W/ CR-MO LOWER CLIP	TH HAMMER W/ CR-MO LOWER CLIP	TH HAMMER W/ CR-MO LOWER CLIP
SADDLE	M-LOGO KNEE GRABBER JUMP SADDLE	M-LOGO KNEE GRABBER JUMP SADDLE	M-LOGO KNEE GRABBER JUMP SADDLE
SEAT POST	ALLOY W/ INTEGRAL CLAMP 25.4X300MM	31.6 MM ALLOY W/ INTEGRAL HEAD 300MM LENGTH	31.6 MM ALLOY W/ INTEGRAL HEAD 300MM LENGTH
SEAT CLAMP	ALLOY W/ STEEL THREADED INSERT	ALLOY Q/R	ALLOY Q/R
EXTRAS	BOLT ON DER HANGER WITH INTEGRATED CHAIN TENSIONER, REMOVEABLE/CONVERTABLE RIM BRAKE PIVOTS	INTEGRATED CHAIN TENSIONER	MRP SB-3 CHAIN KEEPER, INTEGRATED CHAIN TENSIONER

SPECIFICATIONS: SUBJECT TO CHANGE WITHOUT NOTICE

Table with 5 columns: MODEL, OTERO COMP, OTERO ELITE, OTERO SUPER. Rows include COLORS, SIZES, FRAME, FORK, REAR SHOCK, CRANKSET, BB, PEDALS, FRT DER., RR DER., SHIFTERS, FREEWHEEL, CHAIN, RIMS, TIRES, FRONT HUB, REAR HUB, SPOKES, NIPPLES, FRONT BRAKE, REAR BRAKE, BRAKE LEVERS, HANDLEBAR, STEM, GRIPS, HEADSET, SADDLE, SEAT POST, SEAT CLAMP.

P. COREY RADLUND



Table with 5 columns: MODEL, ZERO G 26, ZERO G 24, ZERO G 20. Rows include COLORS, SIZES, FRAME, FORK, CRANKSET / CHAINWHEEL, BB, PEDALS, FRT. DER., RR. DER., SHIFTERS, FREEWHEEL, CHAIN, RIMS, TIRES, FRONT HUB, REAR HUB, SPOKES, NIPPLES, FRONT BRAKE, REAR BRAKE, BRAKE LEVERS, HANDLEBAR, STEM, GRIPS, HEADSET, SADDLE, SEAT POST, SEAT CLAMP.

Table with 6 columns: MODEL, AMISA COMP, TYAX SUPER, TYAX ELITE, TYAX ELITE WOMEN, TYAX COMP. Rows include COLORS, SIZES, FRAME, FORK, REAR SHOCK, CRANKSET, BB, PEDALS, FRT DER., RR DER., SHIFTERS, FREEWHEEL, CHAIN, RIMS, TIRES, FRONT HUB, REAR HUB, SPOKES, NIPPLES, FRONT BRAKE, REAR BRAKE, BRAKE LEVERS, HANDLEBAR, STEM, GRIPS, HEADSET, SADDLE, SEAT POST, SEAT CLAMP.

Table with 5 columns: MODEL, ROCKADILE ALX 26, ROCKADILE AL 24, ROCKADILE AL 20. Rows include COLORS, SIZES, FRAME, FORK, CRANKSET / CHAINWHEEL, BB, PEDALS, FRT. DER., RR. DER., SHIFTERS, FREEWHEEL, CHAIN, RIMS, TIRES, FRONT HUB, REAR HUB, SPOKES, NIPPLES, FRONT BRAKE, REAR BRAKE, BRAKE LEVERS, HANDLEBAR, STEM, GRIPS, HEADSET, SADDLE, SEAT POST, SEAT CLAMP, EXTRAS.



SPECIFICATIONS: SUBJECT TO CHANGE WITHOUT NOTICE

Table with 5 columns: MODEL, SABROSA 3XP, SABROSA 1X1, CROSSWAY 450, CROSSWAY 350, CROSSWAY 250, SWITCHBACK SX. Rows include COLORS, SIZES, FRAME, FORK, CRANKSET / CHAINWHEEL, BB, PEDALS, FRT. DER., RR. DER., SHIFTERS, FREEWHEEL, CHAIN, RIMS, TIRES, FRONT HUB, REAR HUB, SPOKES, NIPPLES, FRONT BRAKE, REAR BRAKE, BRAKE LEVERS, HANDLEBAR, STEM, GRIPS, HEADSET, SADDLE, SEAT POST, SEAT CLAMP, EXTRAS.

Table with 3 columns: MODEL, LEGION, FRACTION, SHIELD, EXPERT, BRAWLER, MENACE. Rows include COLORS, FRAME, FORK, CRANKSET / CHAINWHEEL, BB, PEDALS, FREEWHEEL, CHAIN, RIMS, TIRES, FRONT HUB, REAR HUB, SPOKES, FRONT BRAKE, REAR BRAKE, BRAKE LEVERS, BRAKE ROTOR, HANDLEBAR, STEM, GRIPS, HEADSET, SADDLE, SEAT POST, SEAT CLAMP.

Table with 5 columns: MODEL, VILLAIN, MISCHIEF, MISCHIEF (MAG), SUBJECT, PIT CREW (16"), MOTIVATOR FW, MOTIVATOR MINI. Rows include COLORS, FRAME, FORK, CRANKSET / CHAINWHEEL, BB, PEDALS, FREEWHEEL, CHAIN, RIMS, TIRES, FRONT HUB, REAR HUB, SPOKES, FRONT BRAKE, REAR BRAKE, BRAKE LEVERS, BRAKE ROTOR, STEM, GRIPS, HEADSET, SADDLE, SEAT POST, SEAT CLAMP, EXTRAS.

